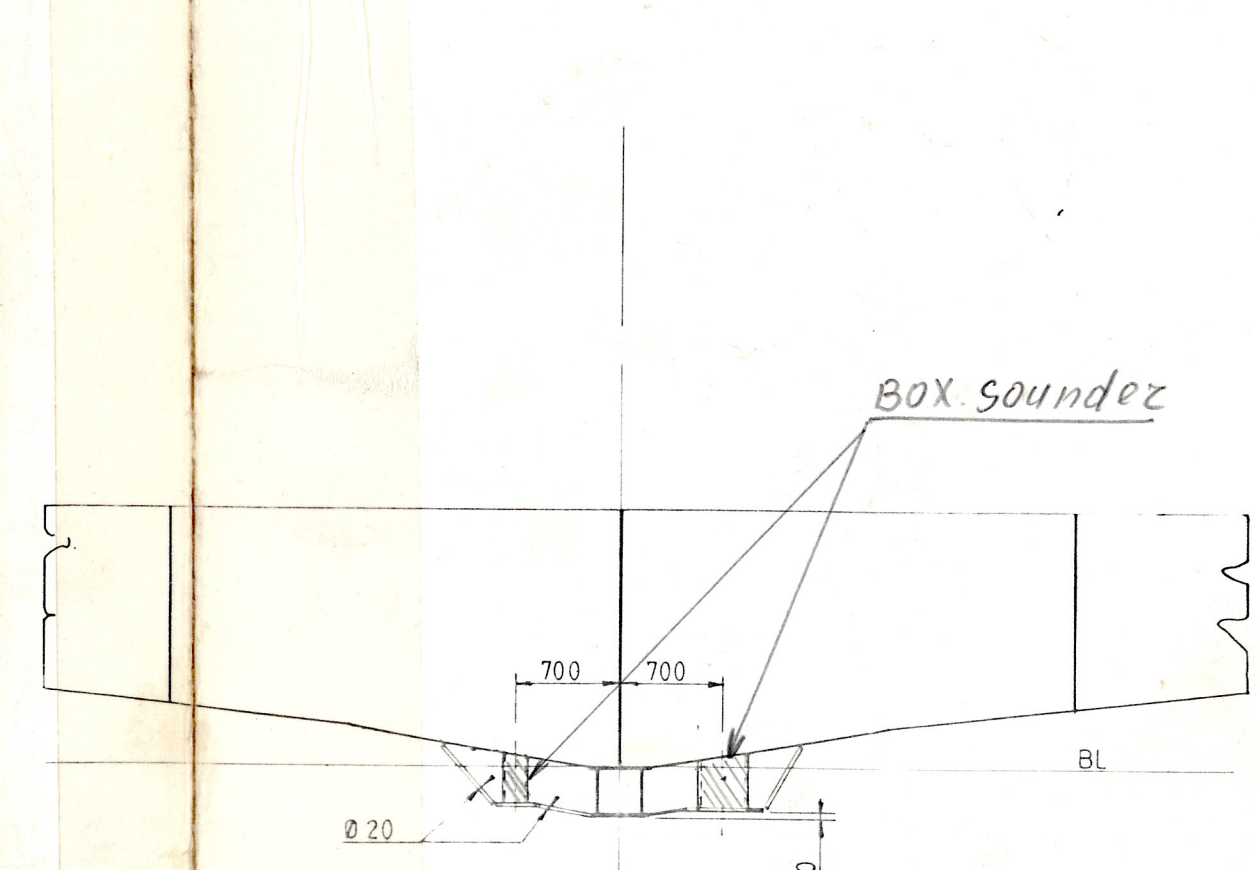
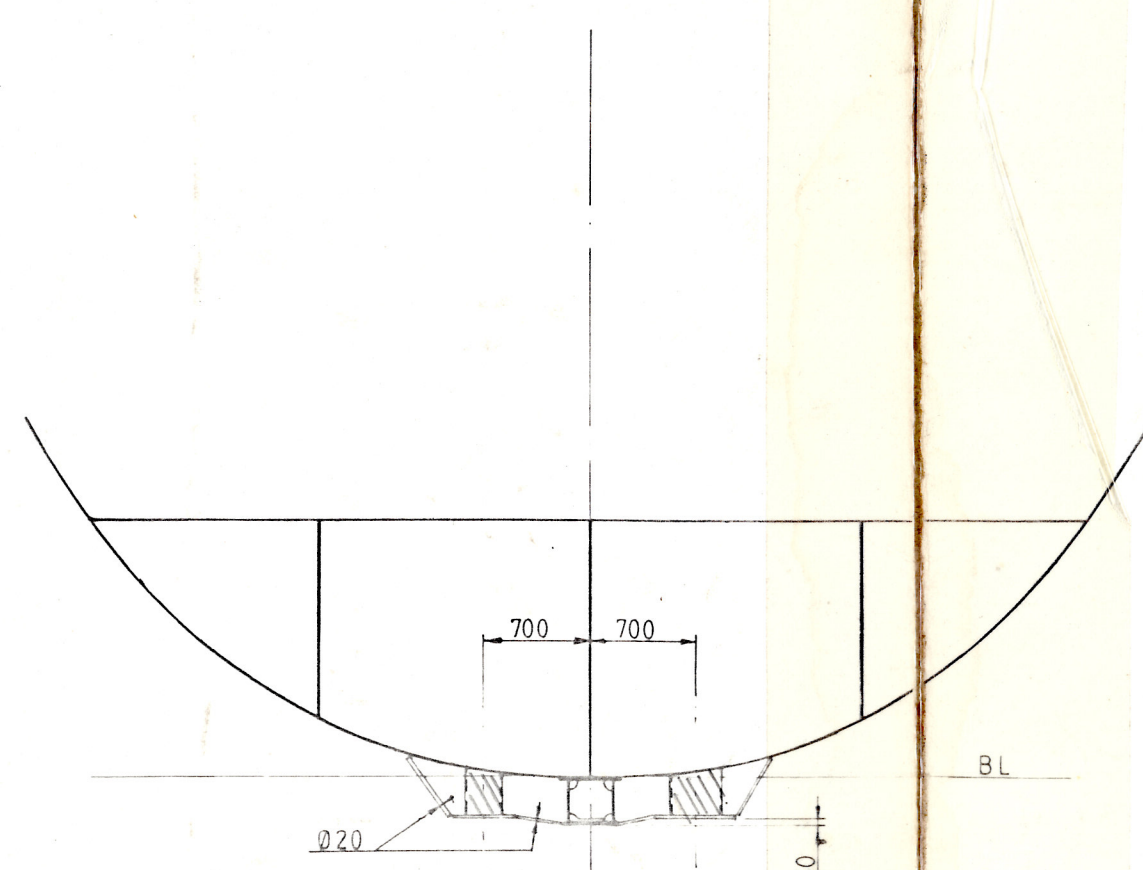


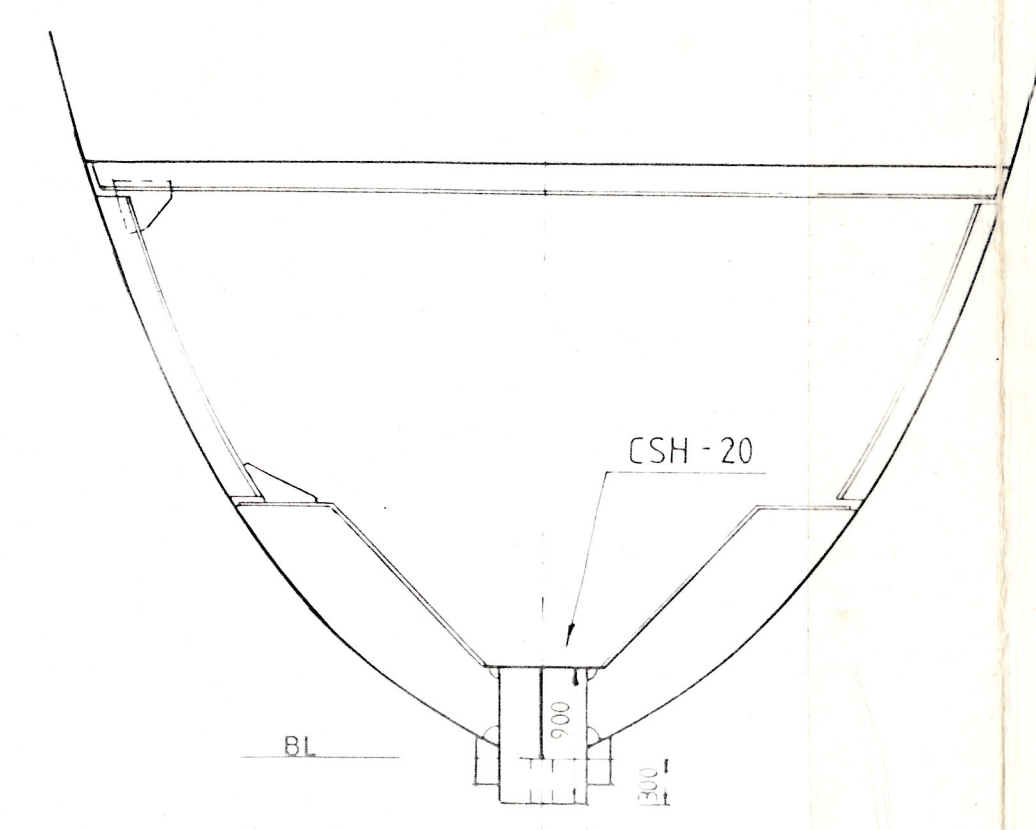
FRAME 120



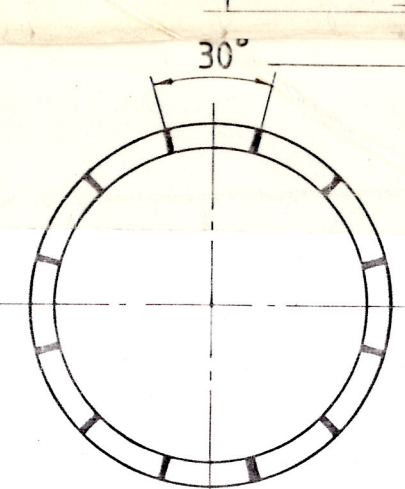
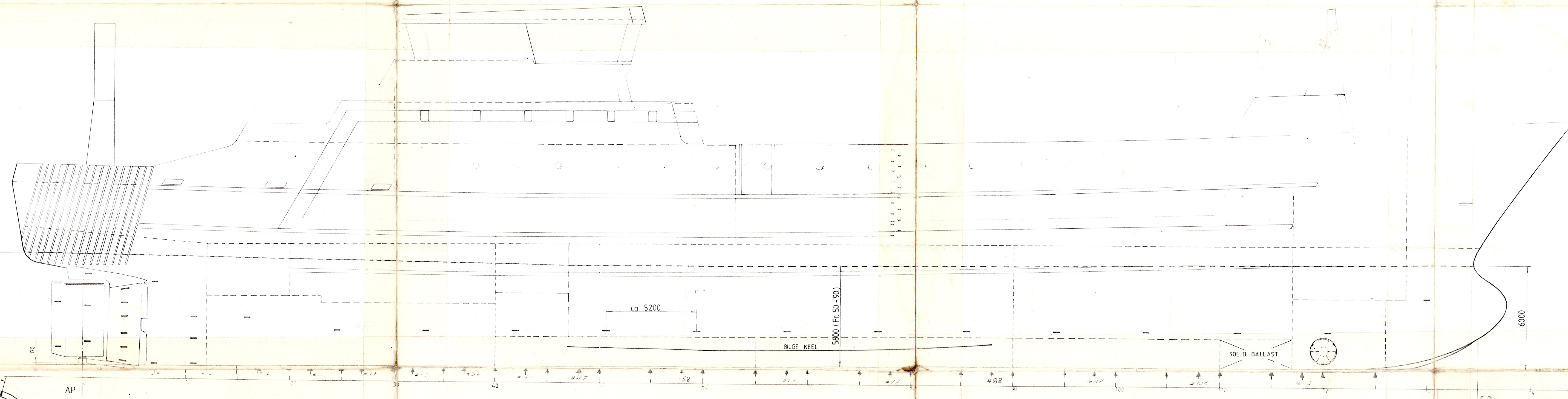
FRAME 47  
FCV-140



FRAME 115



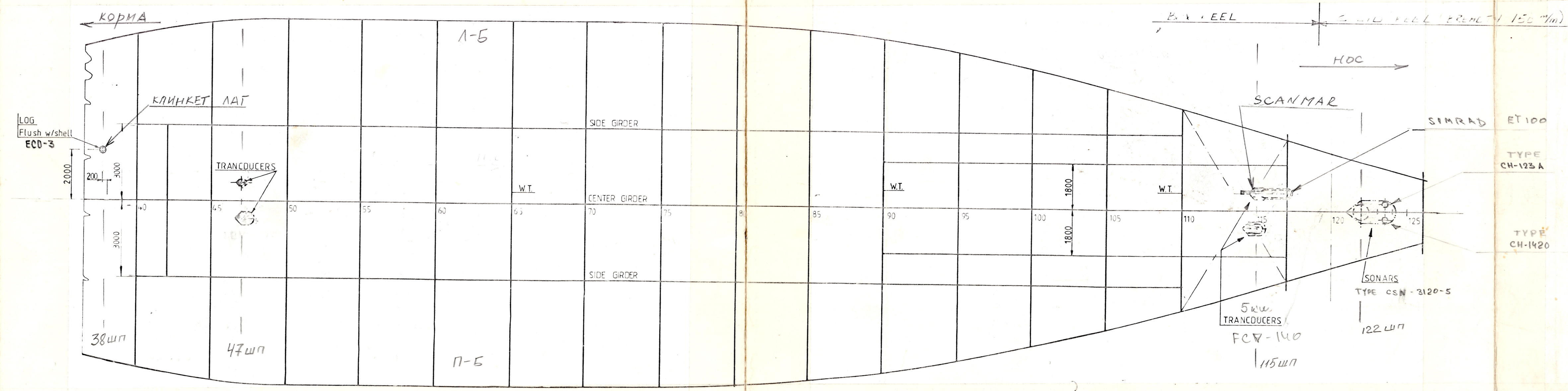
FRAME 122



NOZZLE

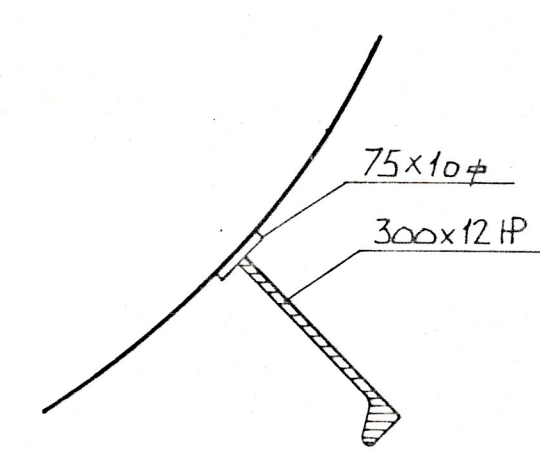
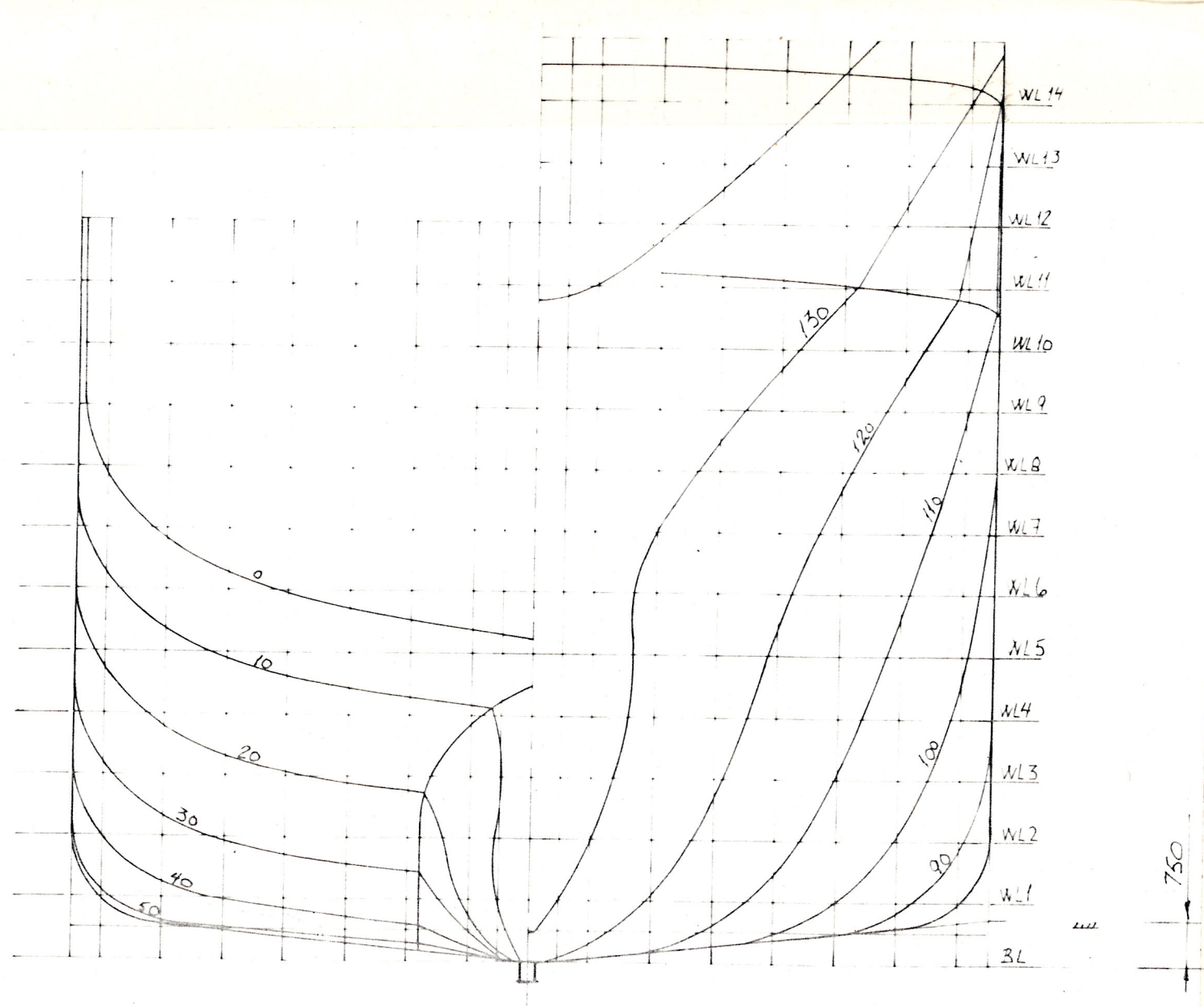
SOLID SOLE PLATE  
(WIDTH 500 mm)

DOCKING POINT

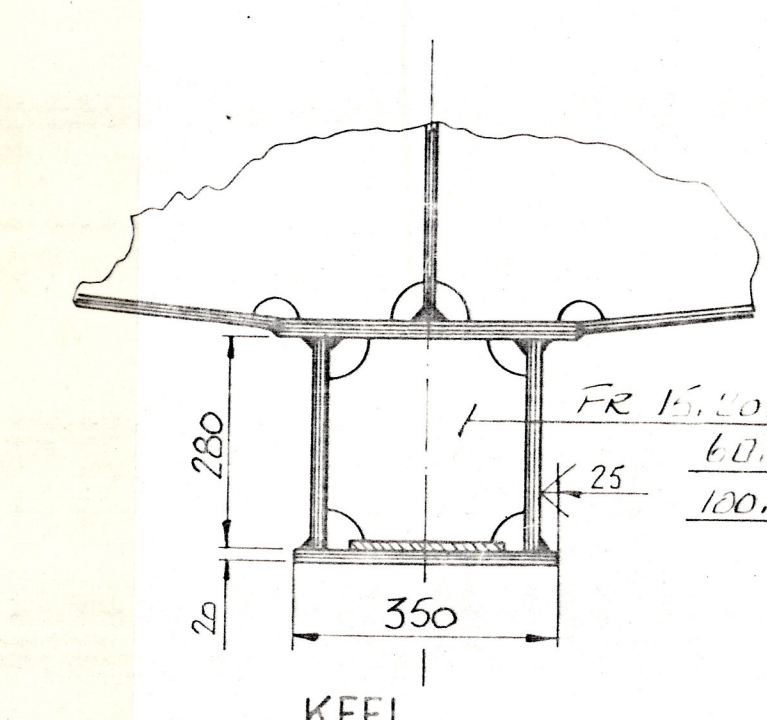


FLOORS AND GIRDERS IN DOBBEL BOTTOM

PLACING OF ANODES			
RUDDER FLAPS	: 4 Pcs. CORAL Z-51	WEIGHT = 20.4 Kg	
RUDDER	: 4 Pcs. CORAL Z-110	WEIGHT = 44.0 Kg	
AFT. SHIP	: 12 Pcs. CORAL Z-160	WEIGHT = 192.0 Kg	
HULL	: 28 Pcs. CORAL Z-160	WEIGHT = 448.0 Kg	
NOZZLE	: 12 Pcs. CORAL Z-160	WEIGHT = 192.0 Kg	
BOW THRUSTER	: 8 Pcs. CORAL Z-110	WEIGHT = 88.0 Kg	
SEA CHEST	: 4 Pcs. CORAL Z-110	WEIGHT = 44.0 Kg	
<b>TOTAL WEIGHT</b>		<b>= 1028.4 Kg</b>	



BILGE KEEL



Box KEEL BETWEEN  
12-119

PRINCIPAL DIMENSIONS

LENGTH OVER ALL	91.30	m
LENGTH BETWEEN PERP	81.00	m
BREADTH	15.00	m
DEPTH 01AC. DECK	13.00	m
DEPTH 1 <sup>ST</sup> DECK	10.00	m
DEPTH 2 <sup>ND</sup> DECK	7.00	m
SUMMER LOAD	7.00	m
FRAME SPACE	0.60	m
WEIGHT LIGHT SHIP	2890	tonn

CLASS: Lloyds + 100 A1 LMC UMS Stern Trawler

SURFACE	: HULL-1860 m <sup>2</sup>	NOZZLE-56 m <sup>2</sup>
PROTECTED TIME	: 2-YEAR	
CURRENT FLOW	: HULL-15 mA/m <sup>2</sup>	NOZZLE-THR.TUNNEL-150 mA/m <sup>2</sup>

Група №1  
KLEVEN LØLAND AS NR 10197

**T/E NOVATOR**

91 m	YARD No.99
<b>FREEZER TRAWLER</b>	KLEVEN LØLAND AS
	5940 LEIRVIK
<b>DOCKINGPLAN</b>	1:100
/АНТЕННИ АКК/	1:50
	02.06.87 S.O. L
<b>Vik &amp; Sandvik AS</b>	972 02 MAR 1989
NAVAL ARCHITECTS - MARINE CONSULTANTS	144 -JM 66
PO BOX 124 N-1418 FITJØN NORWAY	
TEL: 064 97 200 - TELEFAX: 064 97 577	
TELE: 0427 80674	